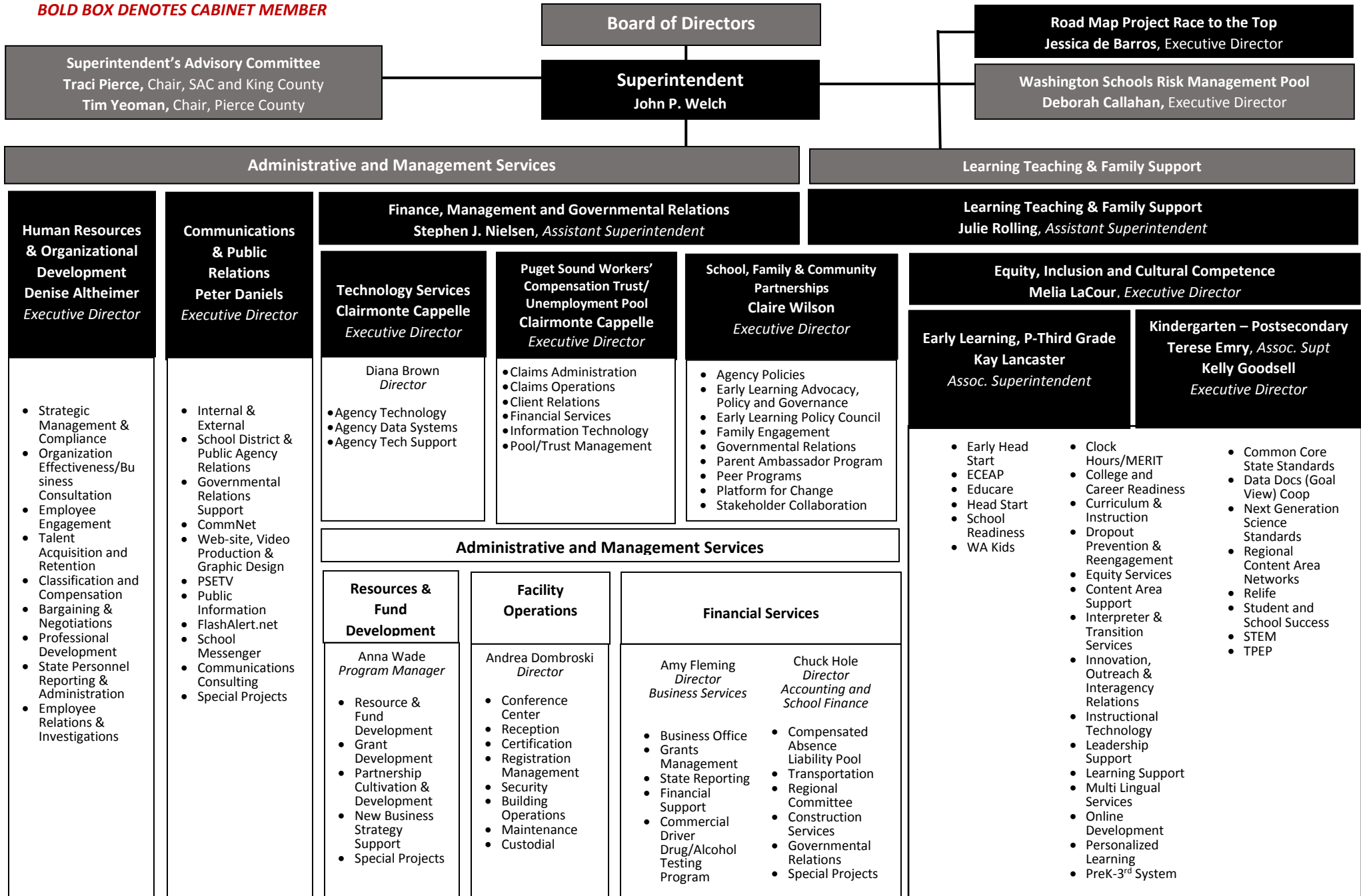




Organizational Chart 2015-16

END: *Success for Each Child & Eliminate the Opportunity Gap*

BOLD BOX DENOTES CABINET MEMBER



Superintendent's Advisory Committee
Traci Pierce, Chair, SAC and King County
Tim Yeoman, Chair, Pierce County

Board of Directors

Superintendent
John P. Welch

Road Map Project Race to the Top
Jessica de Barros, Executive Director

Washington Schools Risk Management Pool
Deborah Callahan, Executive Director

Administrative and Management Services

Learning Teaching & Family Support

Human Resources & Organizational Development
Denise Altheimer
Executive Director

- Strategic Management & Compliance
- Organization Effectiveness/Business Consultation
- Employee Engagement
- Talent Acquisition and Retention
- Classification and Compensation
- Bargaining & Negotiations
- Professional Development
- State Personnel Reporting & Administration
- Employee Relations & Investigations

Communications & Public Relations
Peter Daniels
Executive Director

- Internal & External
- School District & Public Agency Relations
- Governmental Relations Support
- CommNet
- Web-site, Video Production & Graphic Design
- PSETV
- Public Information
- FlashAlert.net
- School Messenger
- Communications Consulting
- Special Projects

Finance, Management and Governmental Relations
Stephen J. Nielsen, Assistant Superintendent

Technology Services
Clairmonte Cappelle
Executive Director

Diana Brown
Director

- Agency Technology
- Agency Data Systems
- Agency Tech Support

Puget Sound Workers' Compensation Trust/Unemployment Pool
Clairmonte Cappelle
Executive Director

- Claims Administration
- Claims Operations
- Client Relations
- Financial Services
- Information Technology
- Pool/Trust Management

School, Family & Community Partnerships
Claire Wilson
Executive Director

- Agency Policies
- Early Learning Advocacy, Policy and Governance
- Early Learning Policy Council
- Family Engagement
- Governmental Relations
- Parent Ambassador Program
- Peer Programs
- Platform for Change
- Stakeholder Collaboration

Learning Teaching & Family Support
Julie Rolling, Assistant Superintendent

Equity, Inclusion and Cultural Competence
Melina LaCour, Executive Director

Early Learning, P-Third Grade
Kay Lancaster
Assoc. Superintendent

- Early Head Start
- ECEAP
- Educare
- Head Start
- School Readiness
- WA Kids
- Clock Hours/MERIT
- College and Career Readiness
- Curriculum & Instruction
- Dropout Prevention & Reengagement
- Equity Services
- Content Area Support
- Interpreter & Transition Services
- Innovation, Outreach & Interagency Relations
- Instructional Technology
- Leadership Support
- Learning Support
- Multi Lingual Services
- Online Development
- Personalized Learning
- PreK-3rd System

Kindergarten – Postsecondary
Terese Emry, Assoc. Supt
Kelly Goodsell
Executive Director

- Common Core State Standards
- Data Docs (Goal View) Coop
- Next Generation Science Standards
- Regional Content Area Networks
- Relife
- Student and School Success
- STEM
- TPEP

Administrative and Management Services

Resources & Fund Development
Anna Wade
Program Manager

- Resource & Fund Development
- Grant Development
- Partnership Cultivation & Development
- New Business Strategy Support
- Special Projects

Facility Operations
Andrea Dombroski
Director

- Conference Center
- Reception
- Certification
- Registration Management
- Security
- Building Operations
- Maintenance
- Custodial

Financial Services

Amy Fleming
Director
Business Services

- Business Office
- Grants Management
- State Reporting
- Financial Support
- Commercial Driver Drug/Alcohol Testing Program

Chuck Hole
Director
Accounting and School Finance

- Compensated Absence Liability Pool
- Transportation
- Regional Committee
- Construction Services
- Governmental Relations
- Special Projects